



Teknomasyon

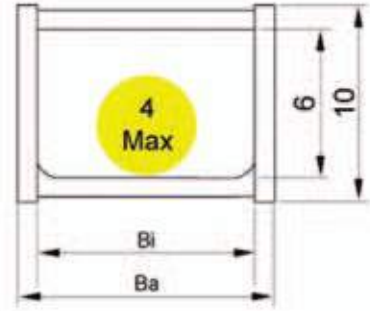


KABLO TAŞIMA KANALLARI **CABLE CHAINS**

www.teknomasyon.com

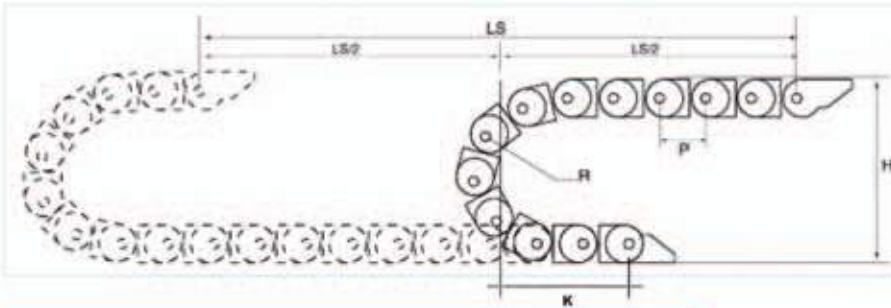

Teknik Özellikler
 Basic technical data

İç yükseklik Inner height(mm)	6
Maksimum kablo çapı Max outer diameter of cable(mm)	4
Hatve T pitch (mm)	17(59 Parça-Segments/m)
Yatay konumdaki maksimum sehim değeri Max horizontal hanging length (m)	0.8
Kıvrılma yarıçapı Optional bending radius (mm)	23

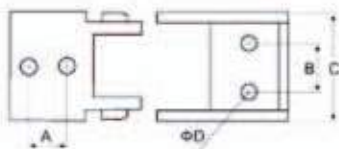


Parça Kodu Type	İç Genişlik Inner width Bi(mm)	Dış Genişlik Outer width Ba(mm)	Ayak Bağlantı No Type of according fixed connector	A (mm)	B (mm)	C (mm)	ØD (mm)
6.16R	16	22	6.16.12PZ	14	12	22	3

Yarı çap (R) ölçüsü katalogta verilen değerler arasından seçilmelidir.
 The bending radius (R) should be selected from the values given in the catalog.

Montaj Ölçüleri
 Mounting Dimensions


[L=LS/2+πR+K]
 L: Uzunluk (Length)
 LS: Hareket mesafesi (The Effective Stroke)
 H: Montaj yüksekliği (Mounting Height)
 R: Kıvrılma yarıçapı (Bending Radius)
 P: Hatve (Pitch)
 K: Hareket mesafesinin orta noktası ile sabitleme noktası arasındaki mesafe (Length between fixing point and the middle of the travel length)

Ayak Bağlantısı
 Connector of the chain


10.10R

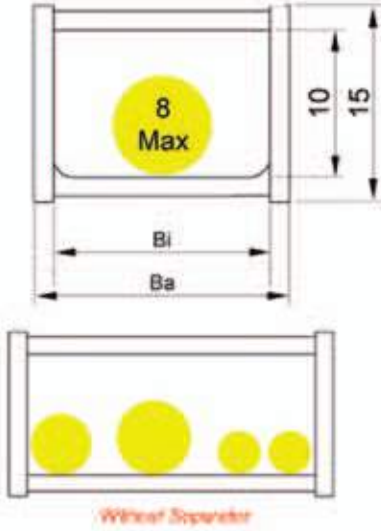


10.15R



10.20R





Teknik Özellikler

Basic technical data

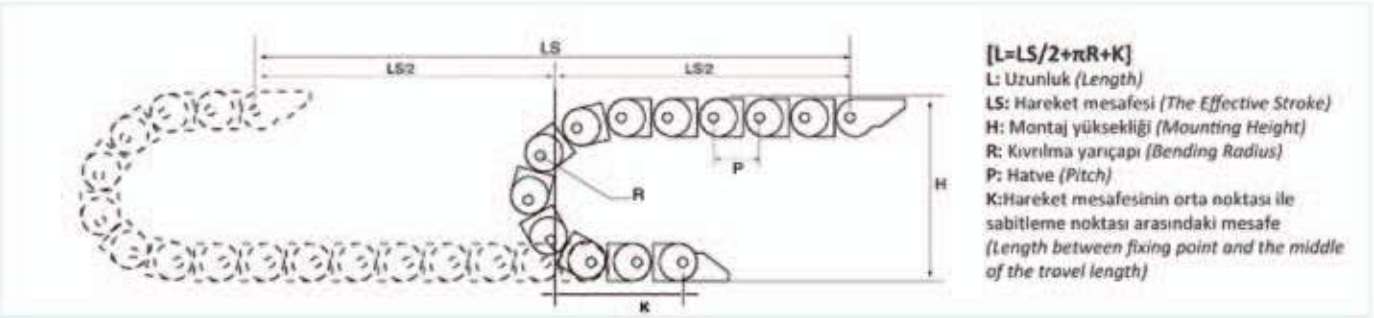
İç yükseklik Inner height(mm)	10
Maksimum kablo çapı Max outer diameter of cable(mm)	8
Hatve T pitch (mm)	20(50 Parça-Segments/m)
Yatay konumdaki maksimum sehim değeri Max horizontal hanging length (m)	0.8
Kıvrılma yarıçapı Optional bending radius(mm)	28/38/48

Parça Kodu Type	İç Genişlik Inner width Bi(mm)	Dış Genişlik Outer width Ba(mm)	Ayak Bağlantı No Type of according fixed connector	A (mm)	B (mm)		ΦD (mm)
					B1	B2	
10.10R	10	17	10.10.12PZ	17	14	12	4
10.15R	15	22	10.15.12PZ	22	14	12	4
10.20R	20	28	10.20.12PZ	28	11	11	4

Yarı çap (R) ölçüsü katalogta verilen değerler arasından seçilmelidir.
The detailed value of R must be chosen from the dimensions

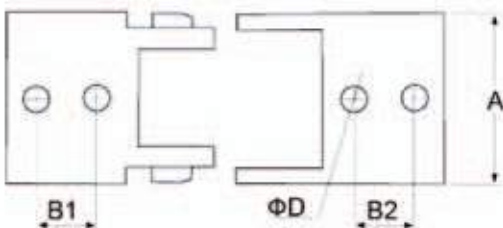
Montaj Ölçüleri

Mounting Dimensions



Ayak Bağlantısı

Connector of the chain



15.15R



15.20R

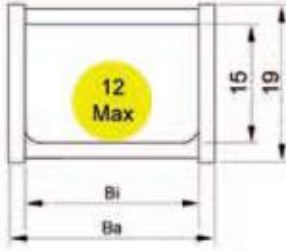


15.40R



15.50R





Without Separator

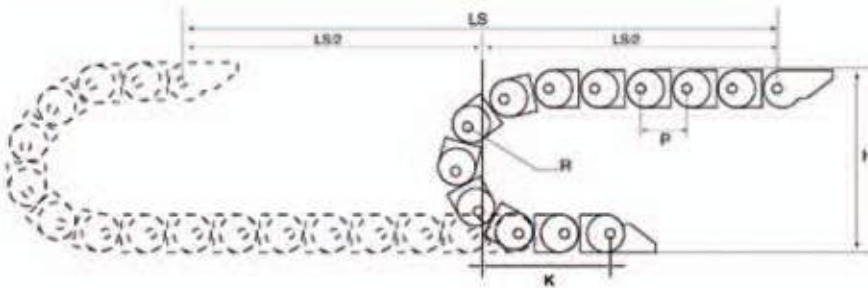
Teknik Özellikler Basic technical data

İç yükseklik Inner height(mm)	15		
Maksimum kablo çapı Max outer diameter of cable(mm)	12		
Hatve T pitch (mm)	15.15R	15.20R	20(50 Parça-Segments/m)
	15.40R	15.50R	18.5(55 Parça-Segments/m)
Yatay konumdaki maksimum sehim değeri Max horizontal hanging length (m)	1.2		
Kıvrılma yarıçapı Optional bending radius (mm)	15.15R	15.20R	28/38/48/75
	15.40R		38
	15.50R		48

Parça Kodu Type	İç Genişlik Inner width Bi(mm)	Dış Genişlik Outer width Ba(mm)	Ayak Bağlantısı No Type of according fixed connector	A (mm)	B (mm)	C (mm)	ΦD (mm)
15.15R	15	23	15.15.12PZ	23	11		4
15.20R	20	29	15.20.12PZ	28	16	5	5
15.40R	40	51	15.40.12PZ	50	24	5	5
15.50R	50	59	15.50.12PZ	60	32	6	5

Yan çap (R) ölçüsü katalogta verilen değerler arasından seçilmelidir.
The detailed value of R must be chosen from the dimensions

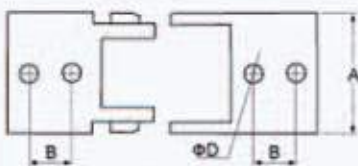
Montaj Ölçüleri Mounting Dimensions



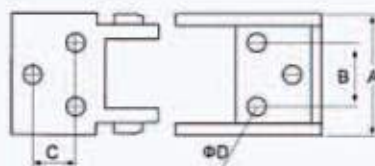
$$[L=LS/2+\pi R+K]$$

L: Uzunluk (Length)
LS: Hareket mesafesi (The Effective Stroke)
H: Montaj yüksekliği (Mounting Height)
R: Kıvrılma yarıçapı (Bending Radius)
P: Hatve (Pitch)
K: Hareket mesafesinin orta noktası ile sabitleme noktası arasındaki mesafe (Length between fixing point and the middle of the travel length)

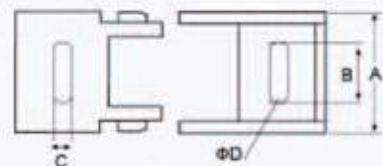
Ayak Bağlantısı Connector of the chain



15.15R



15.40R

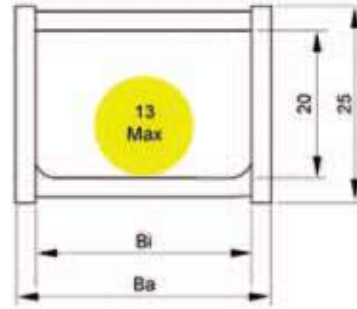


15.20R 15.50R



Teknik Özellikler
Basic technical data

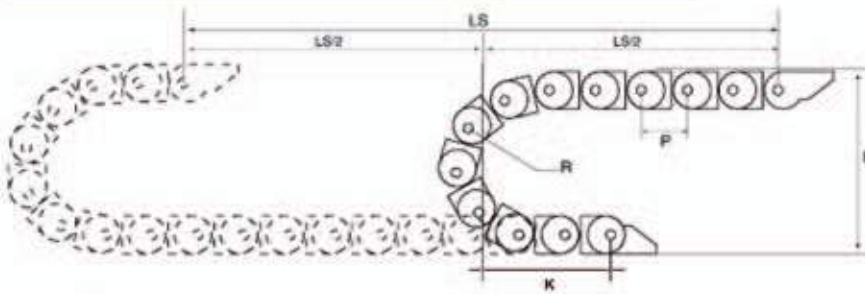
İç yükseklik Inner height(mm)	15
Maksimum kablo çapı Max outer diameter of cable(mm)	13
Hatve T pitch (mm)	30(33 Parça-Segments/m)
Yatay konumdaki maksimum sehim değeri Max horizontal hanging length (m)	1.0
Kıvrılma yarıçapı Optional bending radius (mm)	28/38/48/75



Parça Kodu Type	İç Genişlik Inner width Bi(mm)	Dış Genişlik Outer width Ba(mm)	Ayak Bağlantı No Type of according fixed connector	A (mm)	B (mm)	C (mm)	ΦD (mm)
20.25R	25	36	20.25.12PZ	35	13	4	4

Yarı çap (R) ölçüsü katalogta verilen değerler arasından seçilmelidir.
The detailed value of R must be chosen from the dimensions

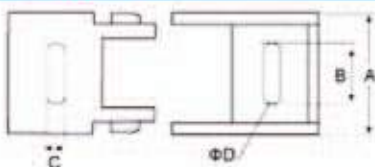
Montaj Ölçüleri
Mounting Dimensions



[L=LS/2+πR+K]

- L: Uzunluk (Length)
- LS: Hareket mesafesi (The Effective Stroke)
- H: Montaj yüksekliği (Mounting Height)
- R: Kıvrılma yarıçapı (Bending Radius)
- P: Hatve (Pitch)
- K: Hareket mesafesinin orta noktası ile sabitleme noktası arasındaki mesafe (Length between fixing point and the middle of the travel length)

Ayak Bağlantısı
Connector of the chain

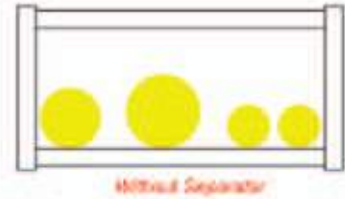
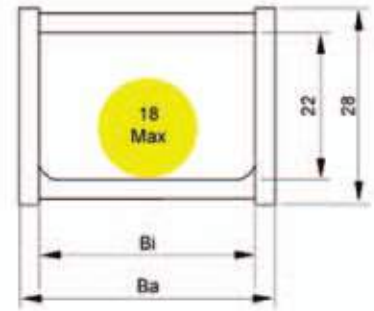




Teknik Özellikler

Basic technical data

İç yükseklik Inner height(mm)	22
Maksimum kablo çapı Max outer diameter of cable(mm)	18
Hatve T pitch (mm)	38.5(26 Parça-Segments/m)
Yatay konumdaki maksimum sehim değeri Max horizontal hanging length(m)	2.5
Maksimum hareket mesafesi Max travel distance (m)	50
Dikey konumdaki maksimum sehim değeri Max vertical hanging (m)	30
Kıvrılma yarıçapı Optional bending radius(mm)	38/55/75/100

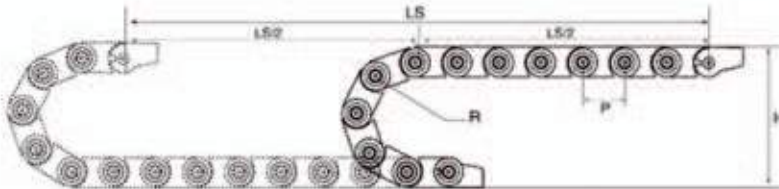


Parça Kodu Type	İç Genişlik Inner width Bi(mm)	Dış Genişlik Outer width Ba(mm)	Ayak Bağlantı No Type of according fixed connector	A (mm)	B (mm)	ΦD (mm)
22.62R	62	76	22.62.12PZ	75	44	4

Yarı çap (R) ölçüsü katalogta verilen değerler arasından seçilmelidir.
The selected value of R must be chosen from the dimension.

Montaj Ölçüleri

Mounting Dimensions



$$[L=LS/2+\pi R+K]$$

L: Uzunluk (Length)

LS: Hareket mesafesi (The Effective Stroke)

H: Montaj yüksekliği (Mounting Height)

R: Kıvrılma yarıçapı (Bending Radius)

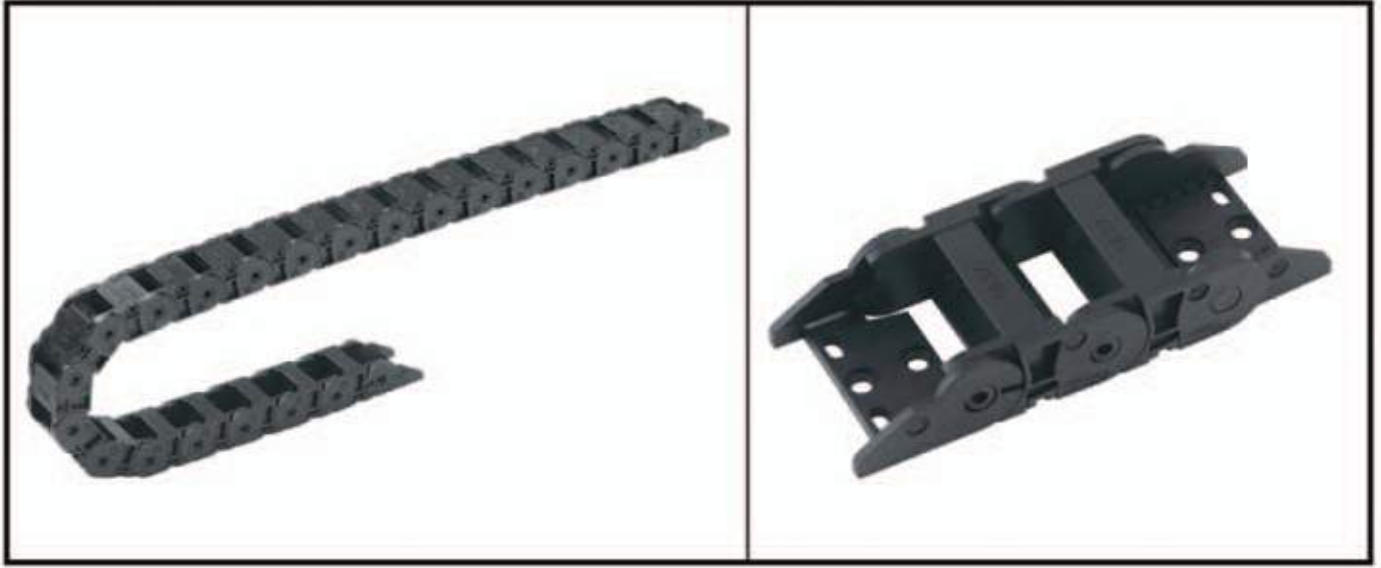
P: Hatve (Pitch)

K: Hareket mesafesinin orta noktası ile sabitleme noktası arasındaki mesafe (Length between fixing point and the middle of the travel length)

Ayak Bağlantısı

Connector of the chain



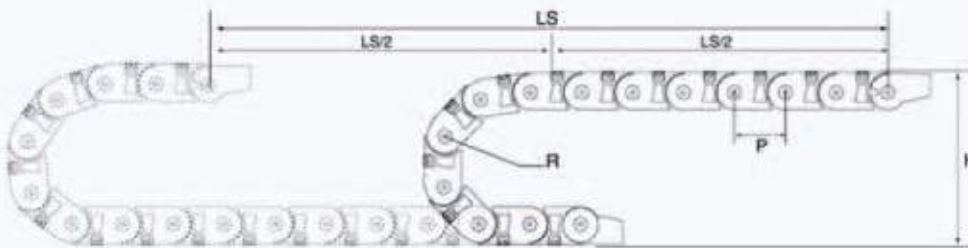


Parça Kodu Type	İç Genişlik Inner width Bi(mm)	Dış Genişlik Outer width Ba(mm)	Ayak Bağlantı No Type of according fixed connector	A (mm)	B (mm)		C (mm)	ØD (mm)
					B1	B2		
18.18R	18	30	18.18.12PZ	30	16	11	15	5
18.25R	25	38	18.25.12PZ	38	20		6	6
18.37R	37	49	18.37.12PZ	49	25		15	5

Yarı çap (R) ölçüsü katalogta verilen değerler arasından seçilmelidir.

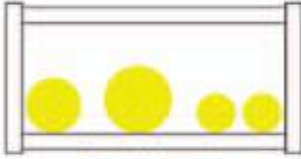
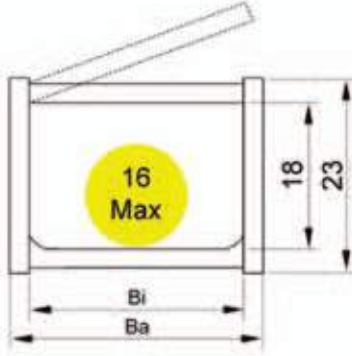
The selected value of R must be chosen from the catalogue.

Montaj Ölçüleri Mounting Dimensions



$$[L=LS/2+\pi R+K]$$

- L: Uzunluk (Length)
- LS: Hareket mesafesi (The Effective Stroke)
- H: Montaj yüksekliği (Mounting Height)
- R: Kıvrılma yarıçapı (Bending Radius)
- P: Hatve (Pitch)
- K: Hareket mesafesinin orta noktası ile sabitleme noktası arasındaki mesafe (Length between fixing point and the middle of the travel length)



Milimet Ölçülerdir

Teknik Özellikler

Basic technical data

İç yükseklik Inner height(mm)	18
Maksimum kablo çapı Max outer diameter of cable(mm)	16
Hatve T pitch (mm)	33.5(30 Parça-Segments/m)
Yatay konumdaki maksimum sehim değeri Max horizontal hanging length (m)	1.2
Kıvrılma yarıçapı Optional bending radius (mm)	28/38/48/58/75

Uygulama Alanı

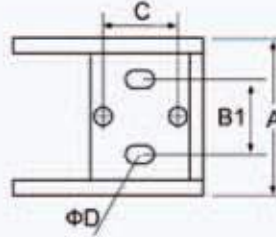
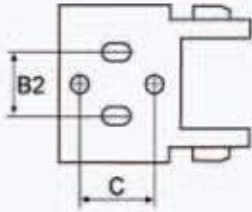
Application

Hafif yükü, kısa yada orta metrajlı ve düşük hızlı ihtiyaçlara uygundur.
Applied in the condition of light load, medium or short distance, slow speed etc.

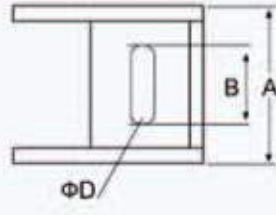
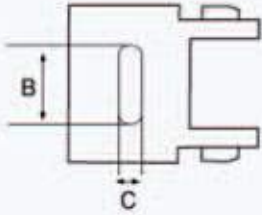
Ayak Bağlantısı

Connector of the chain

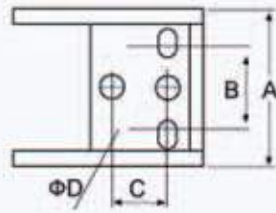
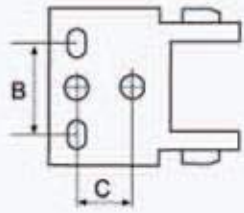
18.18.12PZ

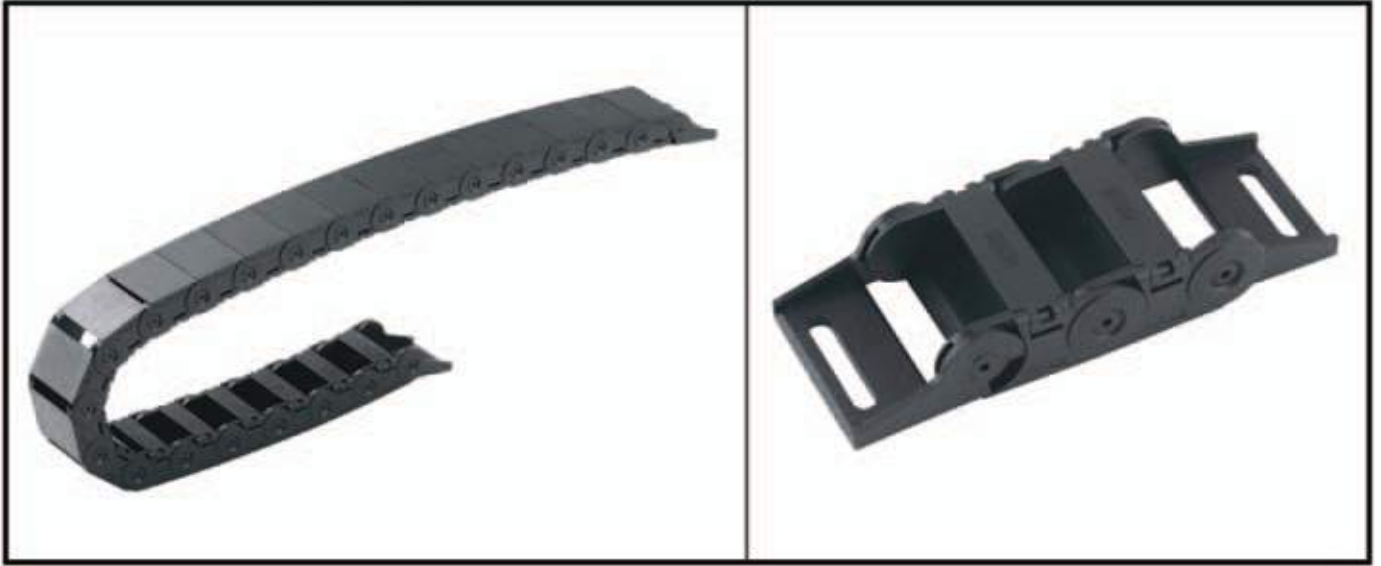


18.25.12PZ



18.37.12PZ



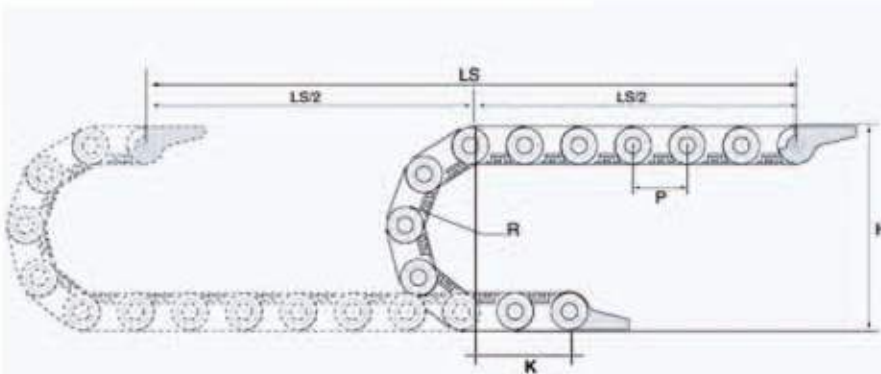


Parça Kodu Type	İç Genişlik Inner width Bi(mm)	Dış Genişlik Outer width Ba(mm)	Ayak Bağlantı No Type of according fixed connector	A (mm)	B (mm)		C (mm)	ΦD (mm)
					B1	B2		
18C.18R	18	30	18C.18.12PZ	30	16	11	15	5
18C.25R	25	38	18C.25.12PZ	38	20		6	6
18C.37R	37	49	18C.37.12PZ	48	31		6	6
18C.50R	50	61	18C.50.12PZ	61	44		6	6

Yarı çap (R) ölçüsü katalogta verilen değerler arasından seçilmelidir.
The detailed value of A must be chosen from the dimensions

Montaj Ölçüleri

Mounting Dimensions



$$[L=LS/2+\pi R+K]$$

L: Uzunluk (Length)

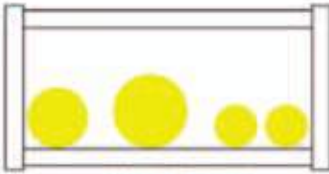
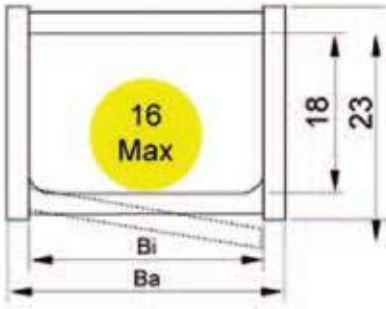
LS: Hareket mesafesi (The Effective Stroke)

H: Montaj yüksekliği (Mounting Height)

R: Kıvrılma yarıçapı (Bending Radius)

P: Hatve (Pitch)

K: Hareket mesafesinin orta noktası ile sabitleme noktası arasındaki mesafe (Length between fixing point and the middle of the travel length)



Mount Separator

Teknik Özellikler
Basic technical data

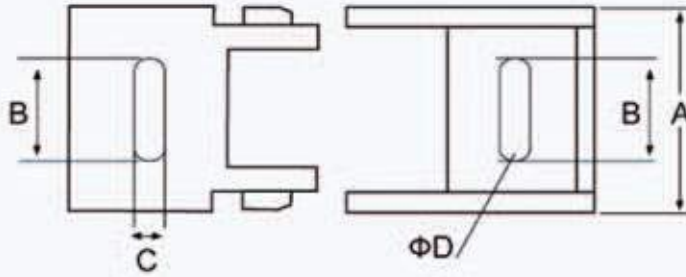
İç yükseklik Inner height(mm)	18
Maksimum kablo çapı Max outer diameter of cable(mm)	16
Hatve T pitch (mm)	33.5(30 Parça-Segments/m)
Yatay konumdaki maksimum sehim değeri Max horizontal hanging length (m)	1.2
Kıvrılma yarıçapı Optional bending radius (mm)	28/38/48/58/75

Uygulama Alanı
Application

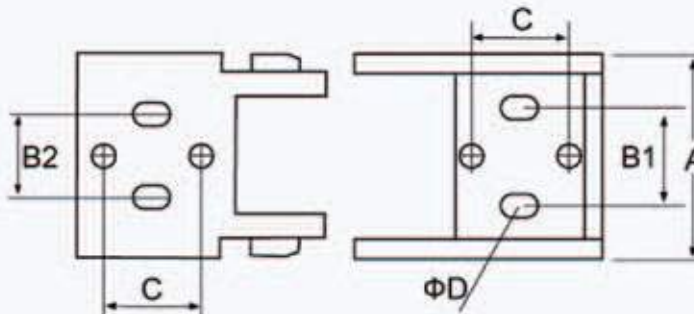
Hafif yüklü, kısa yada orta metrajlı ve düşük hızlı ihtiyaçlara uygundur.
Applied in the condition of light load, medium or short distance, slow speed etc.

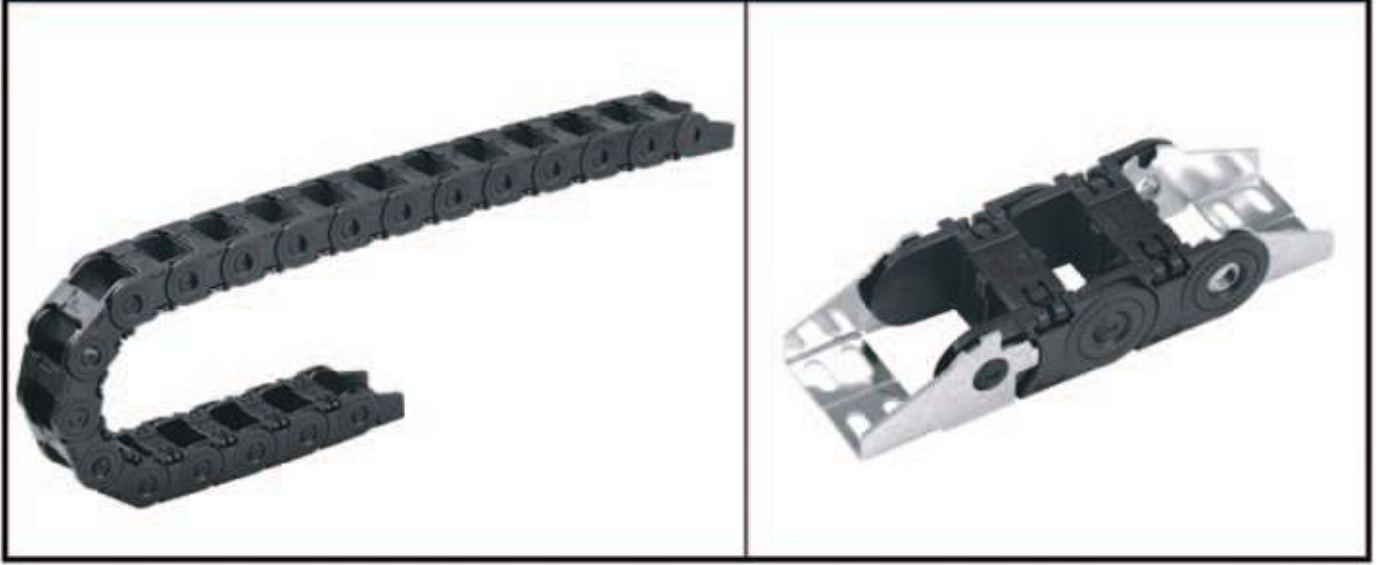
Ayak Bağlantısı
Connector of the chain

18C.25.12PZ
18C.37.12PZ
18C.50.12PZ



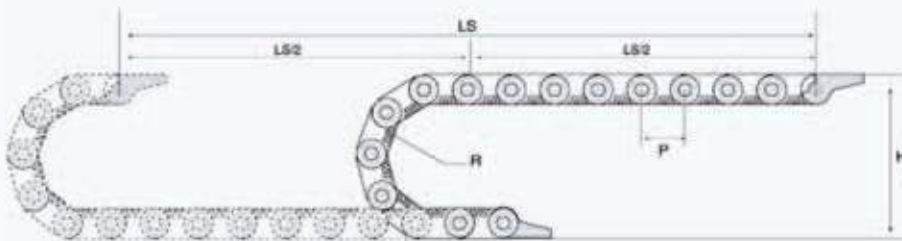
18C.18.12PZ





Parça Kodu Type	İç Genişlik Inner width Bi(mm)	Dış Genişlik Outer width Ba(mm)	Ayak Bağlantı No Type of according fixed connector	Plastic			Metal			
				A (mm)	B (mm)	ΦD (mm)	A (mm)	B (mm)	C (mm)	E (mm)
25.30.R	30	49	25.30.12PZ	49	23	6				
25.38.R	38	57	25.38.12PZ	57	23	6	65	14	26	14
25.57.R	57	77	25.57.12PZ	75	42	6	65	14	45	14
25.77.R	77	97	25.77.12PZ	95	62	6	65	14	65	14
25.103.R	103	123	25.103.12PZ	120	87	6	65	14	91	14

Montaj Ölçüleri Mounting Dimensions



$$[L=LS/2+nR+K]$$

L: Uzunluk (Length)

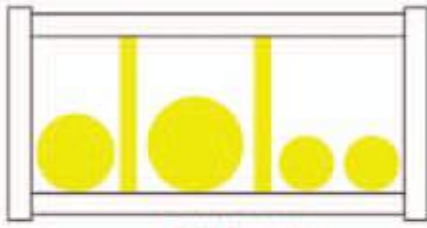
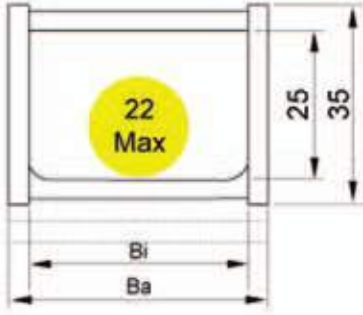
LS: Hareket mesafesi (The Effective Stroke)

H: Montaj yüksekliği (Mounting Height)

R: Kıvrılma yarıçapı (Bending Radius)

P: Hatve (Pitch)

K: Hareket mesafesinin orta noktası ile sabitleme noktası arasındaki mesafe (Length between fixing point and the middle of the travel length)



Web Separator

Teknik Özellikler

Basic technical data

İç yükseklik Inner height(mm)	25
Maksimum kablo çapı Max outer diameter of cable(mm)	22
Hatve T pitch (mm)	46(22 Parça-Segments/m)
Yatay konumdaki maksimum sehim değeri Max horizontal hanging length (m)	1.9
Maksimum hareket mesafesi Max travel distance (m)	70
Dikey konumdaki maksimum sehim değeri Max vertical hanging (m)	30
Kıvrılma yarıçapı Optional bending radius (mm)	55/75/100/125/150/175/200/250

Uygulama Alanı

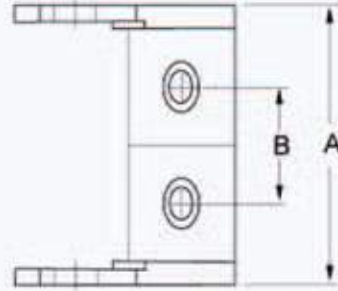
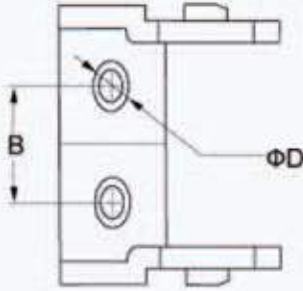
Application

Hafif yüklü, kısa yada orta metrajlı ve düşük hızlı ihtiyaçlara uygundur.

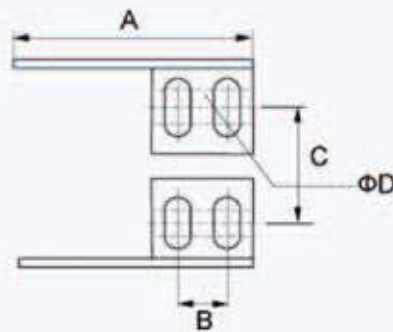
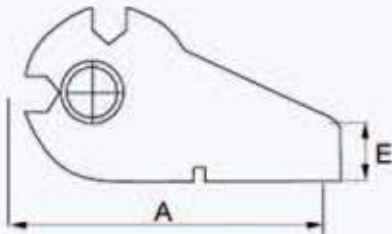
Applied in the condition of light load, medium or short distance, slow speed etc.

Ayak Bağlantısı

Connector of the chain



Plastic



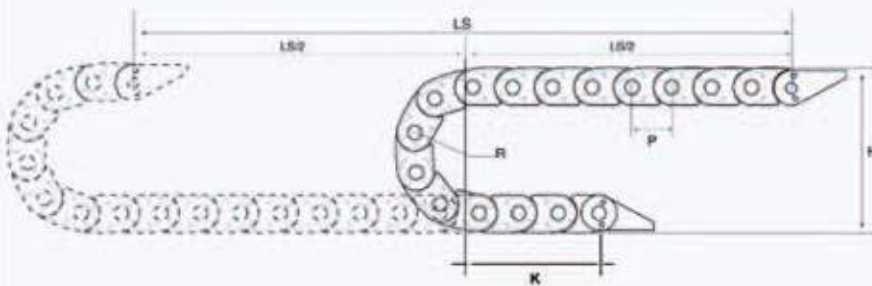
Metal



Parça Kodu Type	İç Genişlik Inner width Bi(mm)	Dış Genişlik Outer width Ba(mm)	Ayak Bağlantı No Type of according fixed connector	Plastic				Metal			
				A (mm)	B (mm)	C (mm)	ØD (mm)	A (mm)	B (mm)	C (mm)	D (mm)
35.50.R	50	69	35.50.12PZ	69	35	17	7	77	25	35	12
35.62.R	62	81	35.62.12PZ	81	47	17	7	77	25	47	12
35.100.R	100	119	35.100.12PZ	119	85	17	7	77	25	85	12
35.125.R	125	144	35.125.12PZ	144	110	17	7	77	25	110	12

Yarı çap (R) ölçüsü katalogta verilen değerler arasından seçilmelidir.
The detailed value of R must be chosen from the dimensions

Montaj Ölçüleri Mounting Dimensions



$$[L=LS/2+\pi R+K]$$

L: Uzunluk (Length)

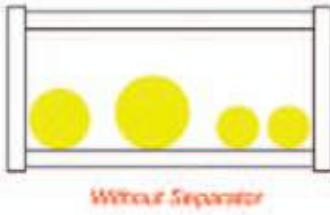
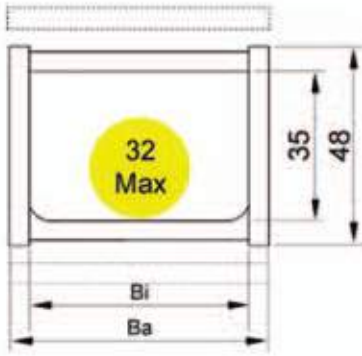
LS: Hareket mesafesi (The Effective Stroke)

H: Montaj yüksekliği (Mounting Height)

R: Kıvrılma yarıçapı (Bending Radius)

P: Hatve (Pitch)

K: Hareket mesafesinin orta noktası ile sabitleme noktası arasındaki mesafe (Length between fixing point and the middle of the travel length)



Teknik Özellikler
Basic technical data

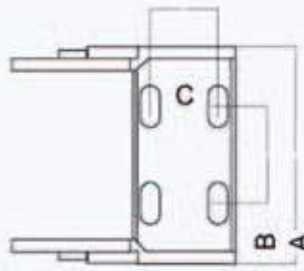
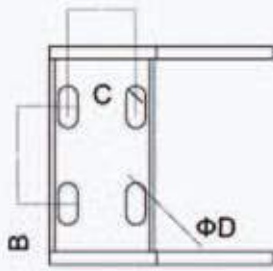
İç yükseklik Inner height(mm)	35
Maksimum kablo çapı Max outer diameter of cable(mm)	32
Hatve T pitch (mm)	46(22 Parça-Segments/m)
Yatay konumdaki maksimum sehim değeri Max horizontal hanging length (m)	2.2
Maksimum hareket mesafesi Max travel distance (m)	100
Dikey konumdaki maksimum sehim değeri Max vertical hanging (m)	40
Kıvrılma yarıçapı Optional bending radius (mm)	75/100/125/150/175/200/250/300

Uygulama Alanı
Application

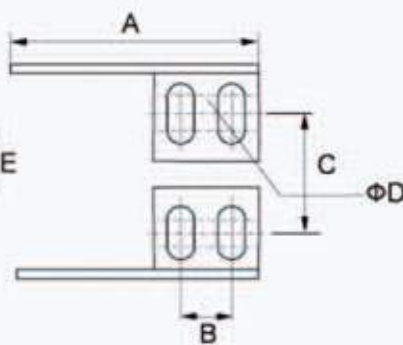
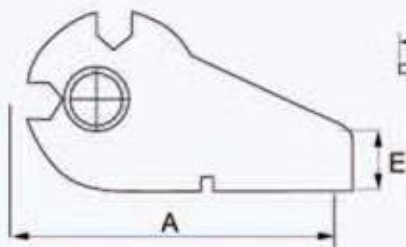
Ağır yükü, uzun metrajlı, yüksek hızlı ve kötü ortam koşullarına sahip ihtiyaçlara uygundur.
Applied in the conditions of heavy load, long distance, high speed movement and environment etc.

Ayak Bağlantısı

Connector of the chain



Plastic



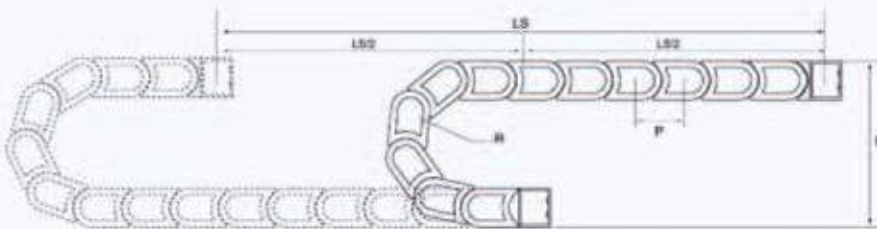
Metal



Parça Kodu Type	İç Genişlik Inner width Bi(mm)	Dış Genişlik Outer width Ba(mm)	Ayak Bağlantı No Type of according fixed connector	A (mm)	B (mm)	C (mm)	ΦD (mm)
35.50.R	50	70	35.50.12PZ	63	22.5	22	5.5
35.75.R	75	95	35.75.12PZ	88	22.5	22	5.5
35.100.R	100	120	35.100.12PZ	113	22.5	22	5.5
35.125.R	125	145	35.125.12PZ	138	22.5	22	5.5
35.150.R	150	170	35.150.12PZ	163	22.5	22	5.5
35.200.R	200	220	35.200.12PZ	213	22.5	22	5.5
35.250.R	250	270	35.250.12PZ	263	22.5	22	5.5

Yarı çap (R) ölçüsü katalogta verilen değerler arasından seçilmelidir.
The detailed value of R must be chosen from the dimensions

Montaj Ölçüleri Mounting Dimensions



$$[L=LS/2+\pi R+K]$$

L: Uzunluk (Length)

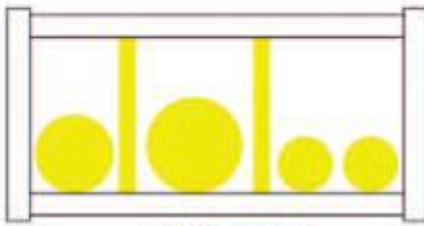
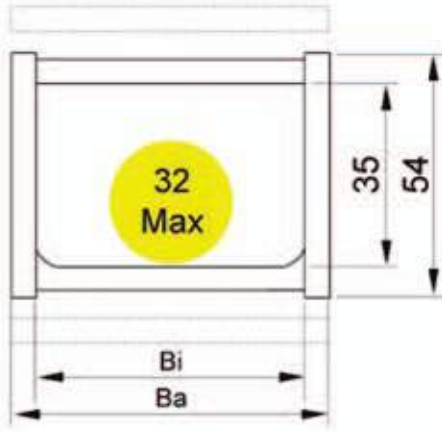
LS: Hareket mesafesi (The Effective Stroke)

H: Montaj yüksekliği (Mounting Height)

R: Kıvrılma yarıçapı (Bending Radius)

P: Hatve (Pitch)

K: Hareket mesafesinin orta noktası ile sabitleme noktası arasındaki mesafe (Length between fixing point and the middle of the travel length)



With Separator

Teknik Özellikler

Basic technical data

İç yükseklik Inner height(mm)	35
Maksimum kablo çapı Max outer diameter of cable(mm)	32
Hatve T pitch (mm)	56(18 Parça-Segments/m)
Yatay konumdaki maksimum sehım değeri Max horizontal hanging length(m)	2,4
Maksimum hareket mesafesi Max travel distance (m)	140
Dikey konumdaki maksimum sehım değeri Max vertical hanging (m)	50
Kıvrılma yarıçapı Optional bending radius (mm)	75/100/125/150/175/200/250/300

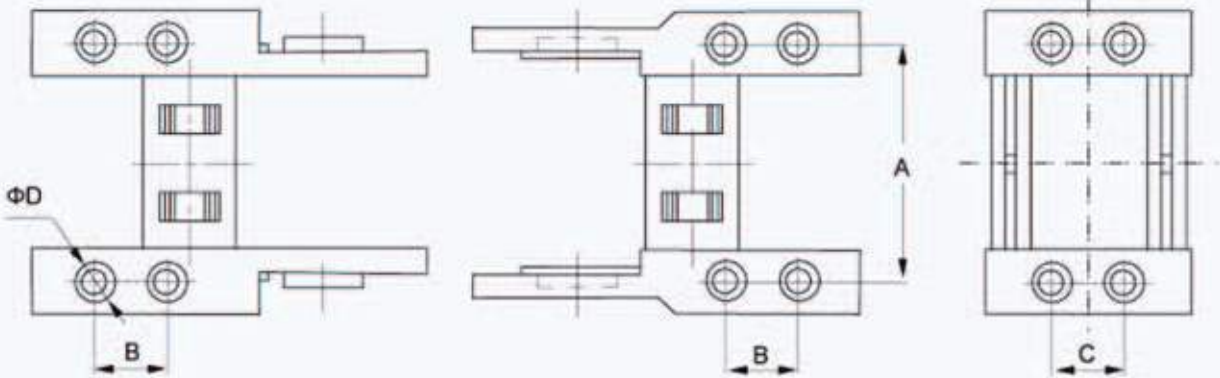
Uygulama Alanı

Application

Ağır yüklü, uzun metrajlı, yüksek hızlı ve kötü ortam koşullarına sahip ihtiyaçlara uygundur.
Applied in the condition of heavy load, long distance, high speed movement,
bad environment etc.

Ayak Bağlantısı

Connector of the chain

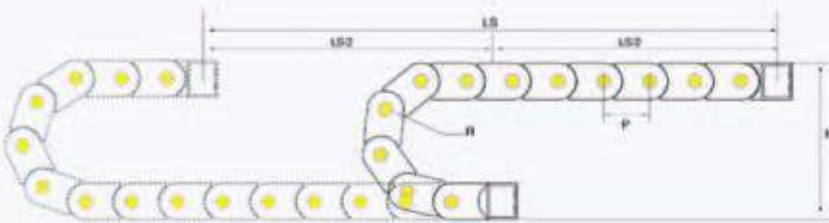




Parça Kodu Type	İç Genişlik Inner width Bi(mm)	Dış Genişlik Outer width Ba(mm)	Ayak Bağlantı No Type of according fixed connector	A	B	C	ΦD
				(mm)	(mm)	(mm)	(mm)
40.50.R	50	75	40.50.12PZ	67	16	21	5.5
40.75.R	75	100	40.75.12PZ	92	16	21	5.5
40.100.R	100	125	40.100.12PZ	117	16	21	5.5
40.125.R	125	150	40.125.12PZ	142	16	21	5.5
40.150.R	150	175	40.150.12PZ	167	16	21	5.5
40.175.R	175	200	40.175.12PZ	192	16	21	5.5
40.200.R	200	225	40.200.12PZ	217	16	21	5.5
40.250.R	250	275	40.250.12PZ	267	16	21	5.5

Yarı çap (R) ölçüsü katalogta verilen değerler arasından seçilmelidir.
(The selected value of R must be chosen from the dimensions)

Montaj Ölçüleri Mounting Dimensions



$$[L=LS/2+\pi R+K]$$

L: Uzunluk (Length)

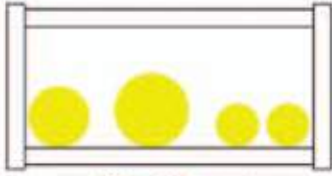
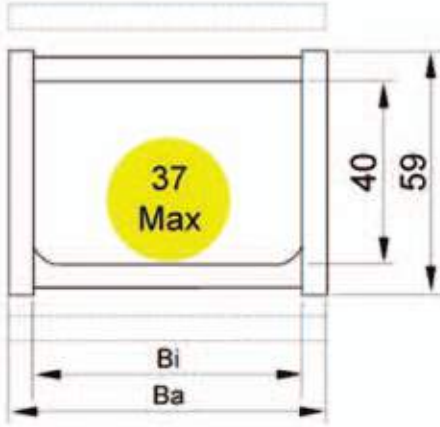
LS: Hareket mesafesi (The Effective Stroke)

H: Montaj yüksekliği (Mounting Height)

R: Kıvrılma yarıçapı (Bending Radius)

P: Hatve (Pitch)

K: Hareket mesafesinin orta noktası ile sabitleme noktası arasındaki mesafe (Length between fixing point and the middle of the travel length)



Without Separator

Teknik Özellikler

Basic technical data

İç yükseklik Inner height(mm)	40
Maksimum kablo çapı Max outer diameter of cable(mm)	37
Hatve T pitch (mm)	67(15 Parça-Segments/m)
Yatay konumdaki maksimum sehim değeri Max horizontal hanging length(m)	2.8
Maksimum hareket mesafesi Max travel distance (m)	200
Dikey konumdaki maksimum sehim değeri Max vertical hanging (m)	70
Kıvrılma yarıçapı Optional bending radius (mm)	75/100/125/150/175/200/250/300

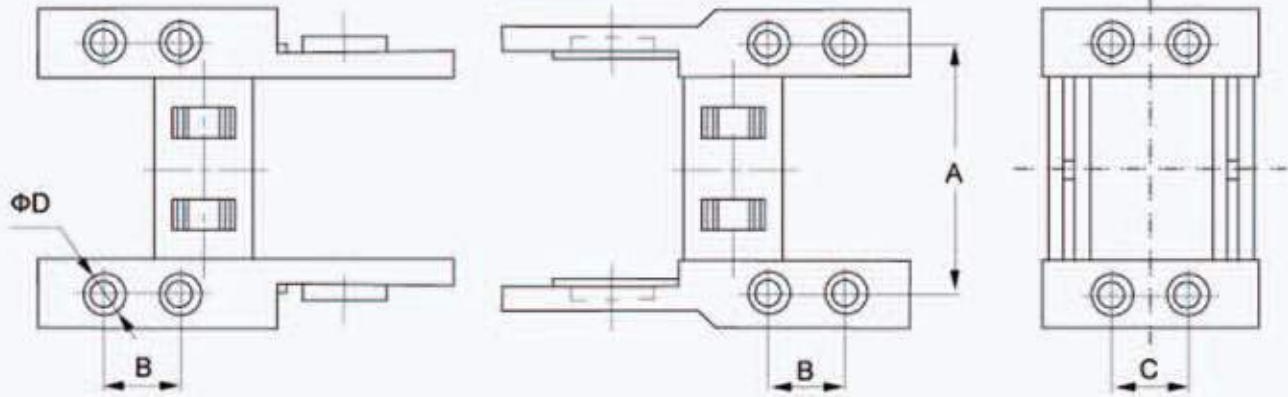
Uygulama Alanı

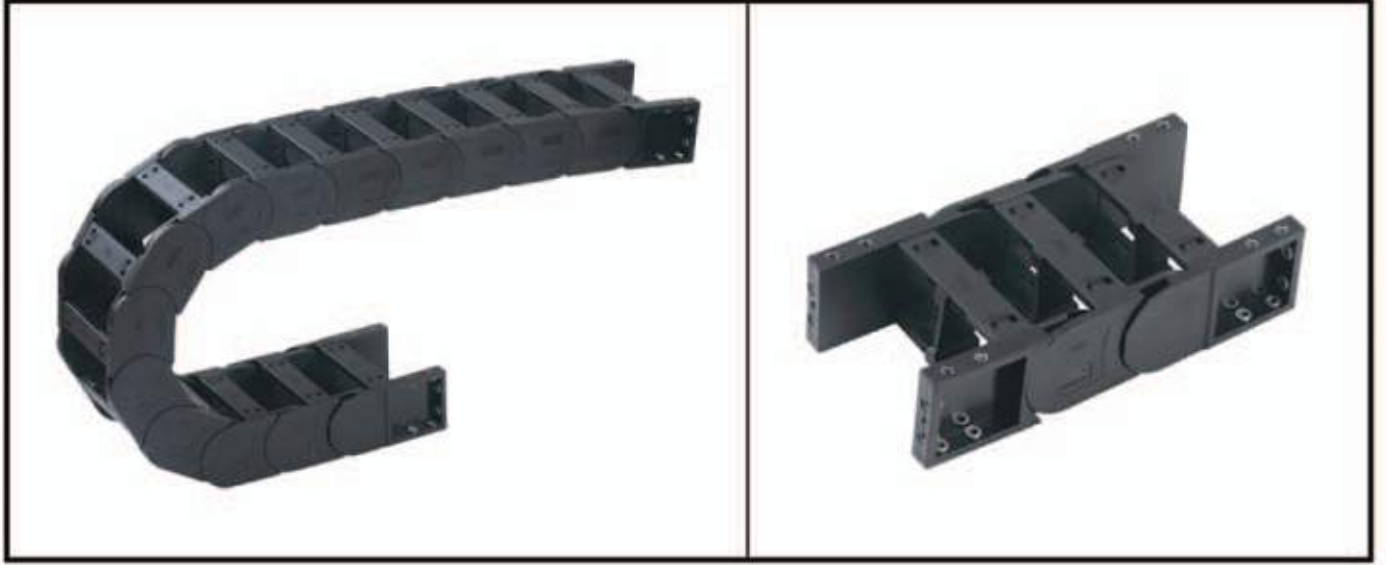
Application

Ağır yüklü, uzun metrajlı, yüksek hızlı ve kötü ortam koşullarına sahip ihtiyaçlara uygundur.
Applied in the condition of heavy load, long distance, high speed movement, bad environment etc.

Ayak Bağlantısı

Connector of the chain



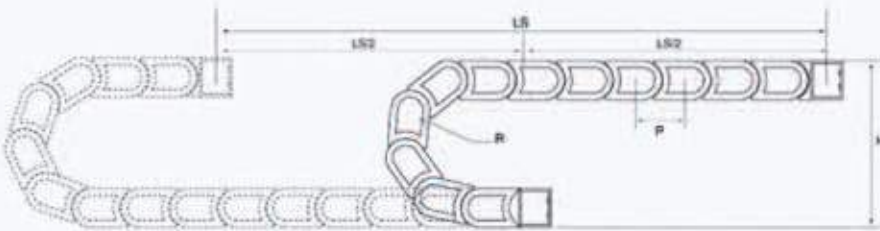


Parça Kodu Type	İç Genişlik Inner width Bi(mm)	Dış Genişlik Outer width Ba(mm)	Ayak Bağlantı No Type of according fixed connector	A (mm)	B (mm)	C (mm)	ΦD (mm)
45.50.R	50	74	45.50.12PZ	66	22.5	24	5.5
45.75.R	75	99	45.75.12PZ	91	22.5	24	5.5
45.100.R	100	124	45.100.12PZ	116	22.5	24	5.5
45.125.R	125	149	45.125.12PZ	141	22.5	24	5.5
45.150.R	150	174	45.150.12PZ	166	22.5	24	5.5
45.175.R	175	199	45.175.12PZ	191	22.5	24	5.5
45.200.R	200	224	45.200.12PZ	216	22.5	24	5.5
45.250.R	250	274	45.250.12PZ	266	22.5	24	5.5

Yarı çap (R) ölçüsü katalogta verilen değerler arasından seçilmelidir.
The detailed value of R must be chosen from the dimensions

Montaj Ölçüleri

Mounting Dimensions



$$[L=LS/2+\pi R+K]$$

L: Uzunluk (Length)

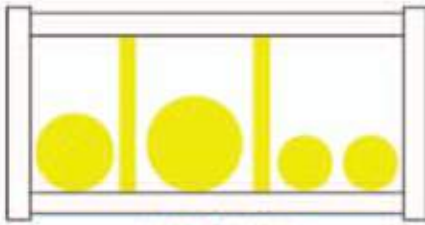
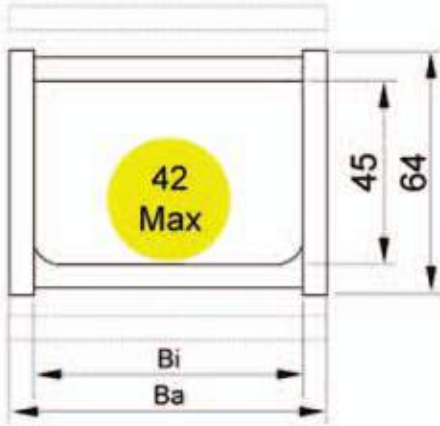
LS: Hareket mesafesi (The Effective Stroke)

H: Montaj yüksekliği (Mounting Height)

R: Kıvrılma yarıçapı (Bending Radius)

P: Hatve (Pitch)

K: Hareket mesafesinin orta noktası ile sabitleme noktası arasındaki mesafe (Length between fixing point and the middle of the travel length)



45 Non Açılabilir

Teknik Özellikler

Basic technical data

İç yükseklik Inner height(mm)	45
Maksimum kablo çapı Max outer diameter of cable(mm)	42
Hatve T pitch (mm)	67(15 Parça-Segments/m)
Yatay konumdaki maksimum sehim değeri Max horizontal hanging length (m)	2.8
Maksimum hareket mesafesi Max travel distance (m)	200
Dikey konumdaki maksimum sehim değeri Max vertical hanging (m)	70
Kıvrılma yarıçapı Optional bending radius (mm)	75/100/125/150/175/200/250/300

Uygulama Alanı

Application

Ağır yüklü, uzun metrajlı, yüksek hızlı ve kötü ortam koşullarına sahip ihtiyaçlara uygundur.
 Applies in the condition of heavy load, long distance, high speed movement, bad environment etc.

Ayak Bağlantısı

Connector of the chain

