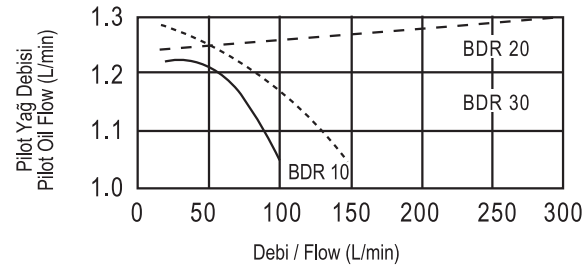
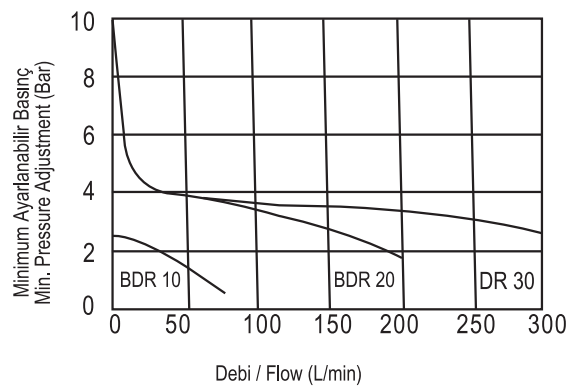
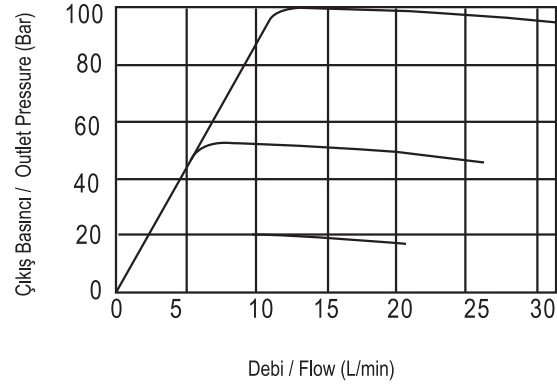
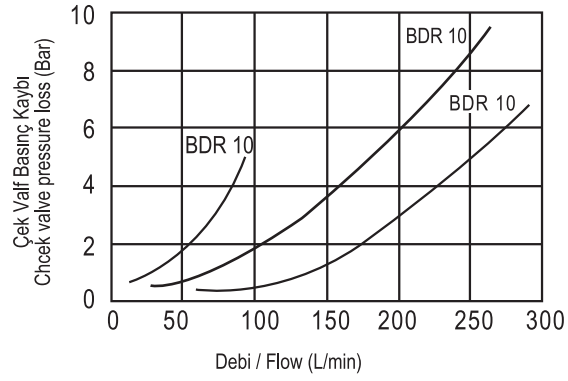
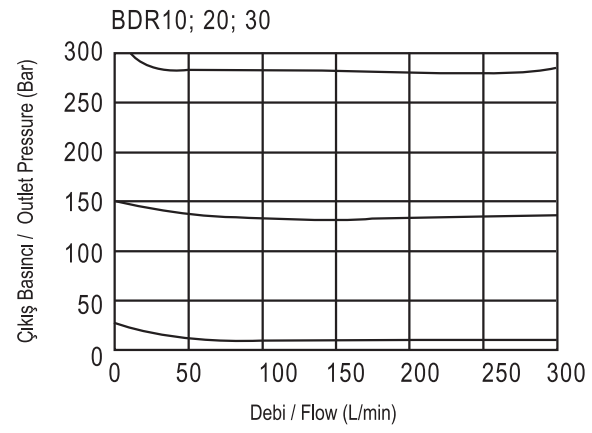
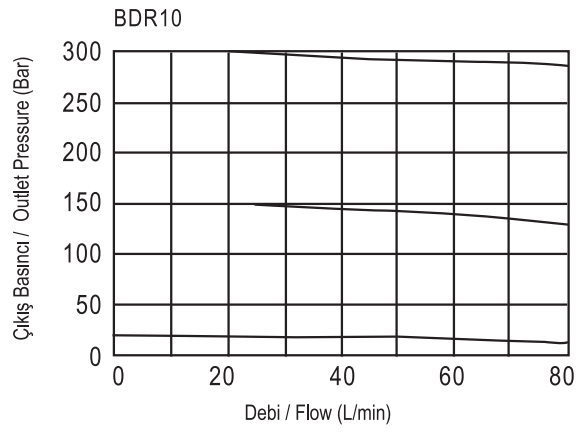


► BDR Çalışma Basıncı & Debi Eğrileri

BDR Operating Pressure & Flow Curves



..... 20 (Bar) Δ P BDR10
 ——— 10 (Bar) Δ P BDR10
 - - - - 20 (Bar) 10 (Bar) Δ P BDR20,30

1

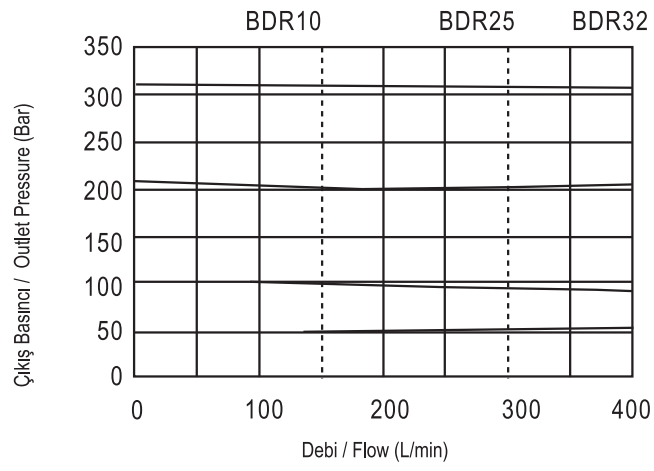
P
R
E
S
S
U
R
E

C
O
N
T
R
O
L

V
A
L
V
E
S

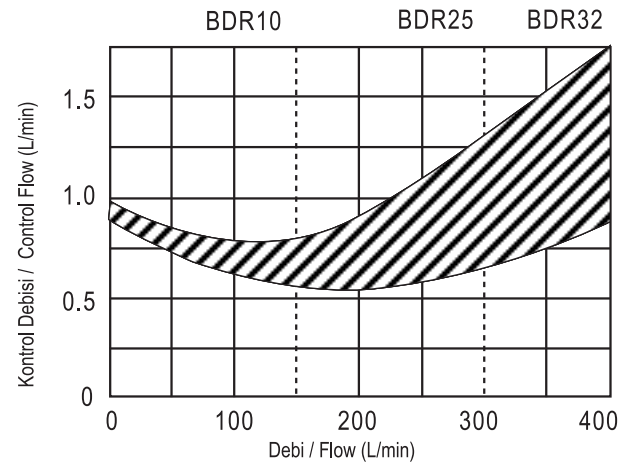
► BDR Çalışma Eğrileri

BDR Operating Curves

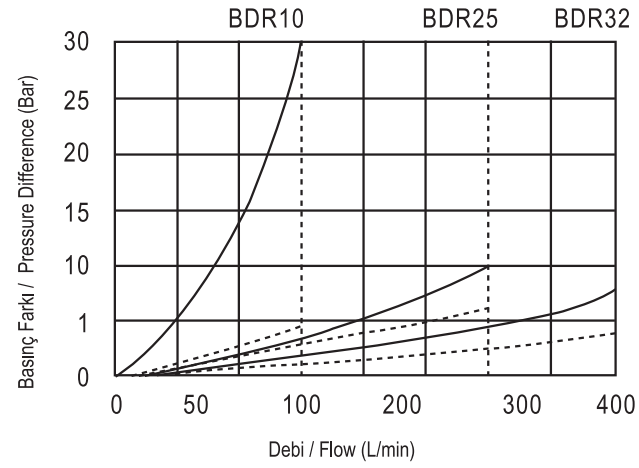
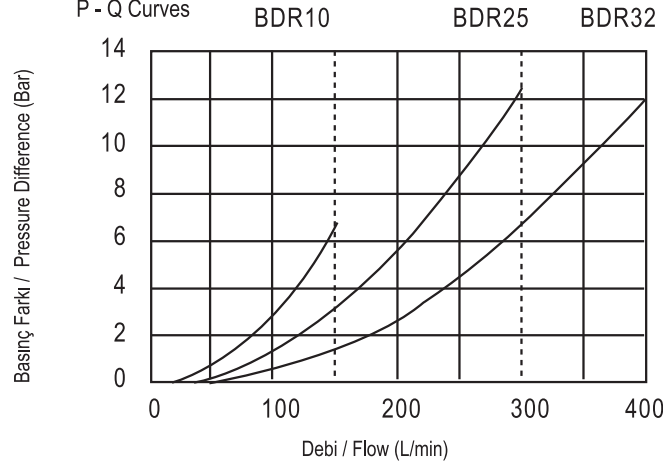


► BDR Pilot ve Sistem Debisi

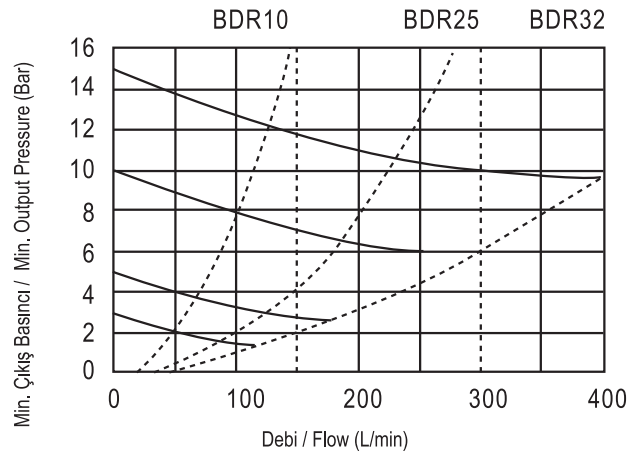
BDR Pilot & System Flow



P - Q Eğrisi
P - Q Curves



► BDR Min. Basınç Ayar ve Debi Eğrisi



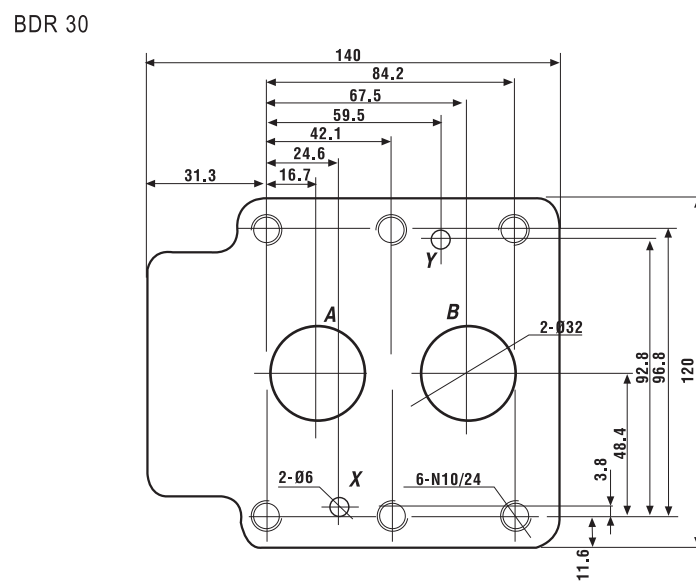
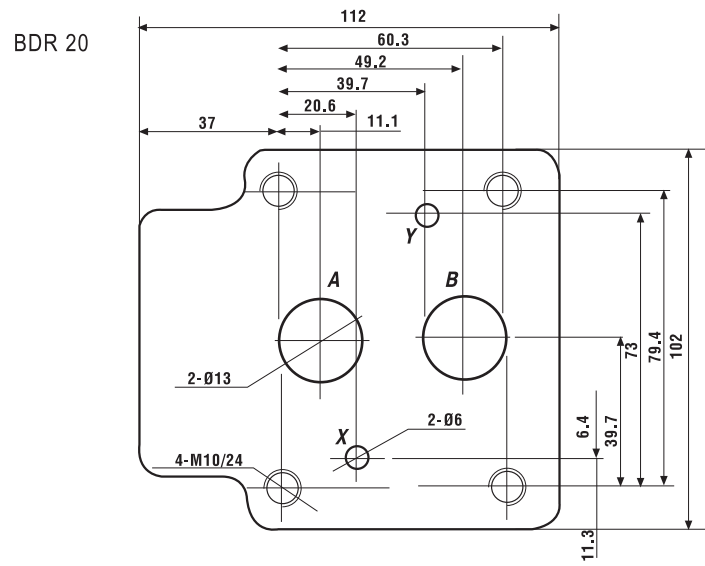
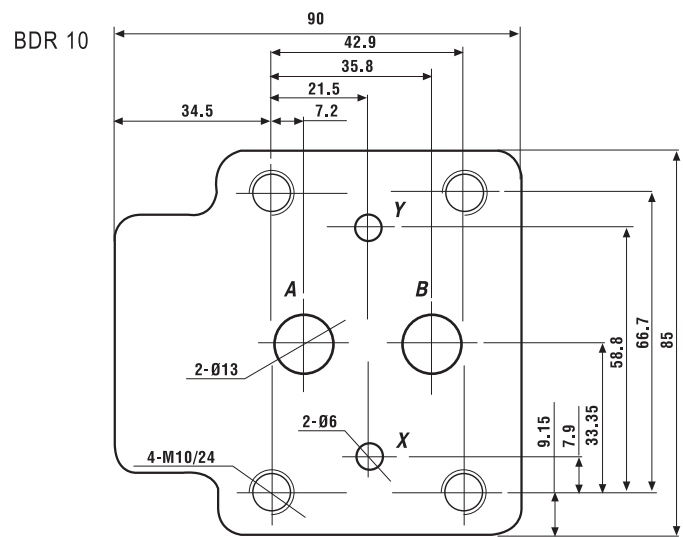
BDR Min. Pressure Setting Flow Curves

— Kartriç kapalıyken akışkan (yağ) rezistansı
Fluid resistance when cartridge closed

- - - Kartriç açıkken akışkan (yağ) rezistansı
Fluid resistance when cartridge open

► BDR Pleyte Bağlantı Ölçüleri

BDR Subplate Mounted Dimensions



BDZ 30/5X PİLOT UYARILI BASINÇ SIRALAMA VALFLERİ

BDZ 30/5X PILOT-OPERATED PRESSURE SEQUENCE VALVES

1

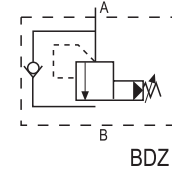
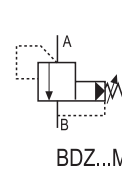
PRESSURE CONTROL VALVES

BDZ tipi pilot uyarılı valfler, sıralama, frenleme, boşaltma ve diğer fonksiyonları kontrol etmede kullanılır. Valf iki bağlantı tipine ve dört çeşit pilot yağıni kontrol yöntemine sahiptir. 5X serisi BDZ tipi valf, kolaylıkla ayarlanabilir performansı, ayarlanabilir geniş deęer aralıęı, yüksek debisi ile 30 serisinden daha yüksek performanslıdır.

BDZ type pilot-operated sequence valve is used to control the sequencing, braking, unloading or other functions. The valve has two connection types and four kinds of control methods of pilot oil, therefore, it has different functions by changing the control method of pilot oil. The 5X series BDZ type valve has higher performance than 30 series, with smoothly adjustable performance, widely adjustable range, high flow rate.



BDZ C 10-1-30 / 210/X M/2 / V *



Daha fazla bilgi
For further details

Kod yok : NBR keçe petrol yağları için
V : FPM keçe fosfat ester için
No code : NBR seals for petroleum oils
V : FPM seals for phosphate ester

Kod yok : Akış hattı G 1/4"
2 : Akış hattı M14 x 1,5
No code : Drain port with G 1/4"
2 : Drain port with M14 x 1,5

Kod yok : Çek valfli
M : Çek valfsiz
No code : With check valve
M : Without check valve

Kod yok : İçten pilot, içten akışlı
X : Dıştan pilot, içten akışlı
Y : İçten pilot, dıştan akışlı
XY : Dıştan pilot, dıştan akışlı

No code : Internal pilot, internal drain
X : External pilot, internal drain
Y : Internal pilot, external drain
XY : External pilot, external drain

Model

Kod yok : Bütün valf
C : Pilot valfi (ölçüsüz)
C : Kartriçli pilot valfi (ölçülü)

No code : Complete valve
C : Pilot valve (Without size)
C : Pilot valve with cartridge (With size)

Ölçü / Size 10 : 10 25 : 20 32 : 30

1 : El Düğmeli (Üçgen)
2 : Vida ayarlı ve koruma kapaklı
1 : Hand knob
2 : Adjustable screw and protective cap

30 : 30 Serie 50 : 5X Serie

Maksimum ayarlanabilir basınç 210 Bar
Max. adjustable pressure is 210 Bar

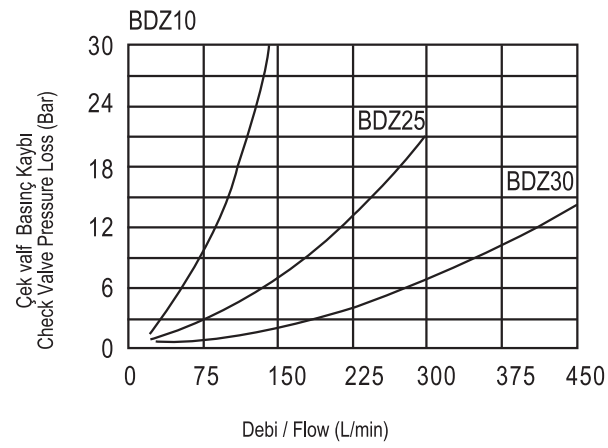
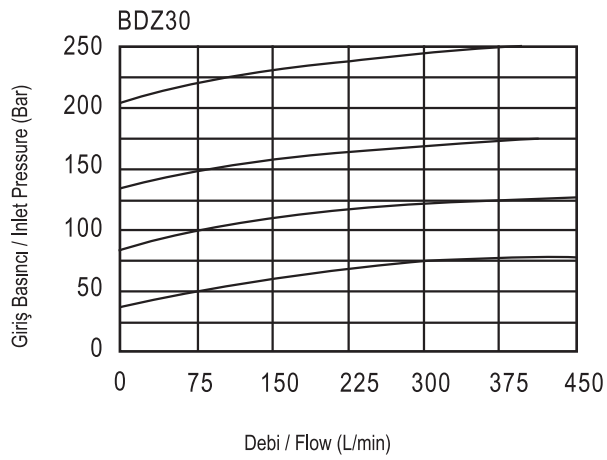
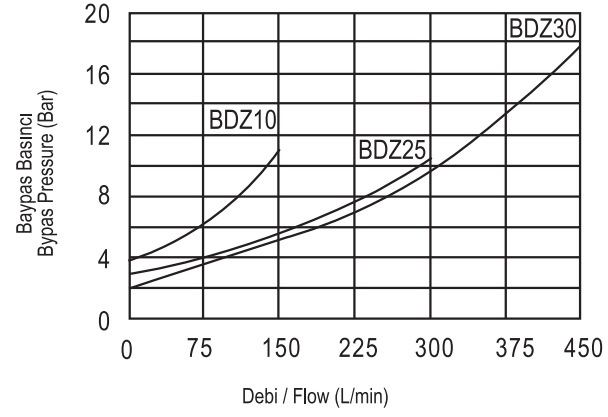
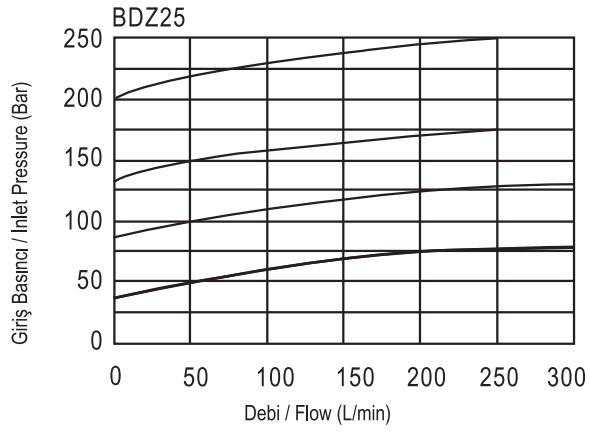
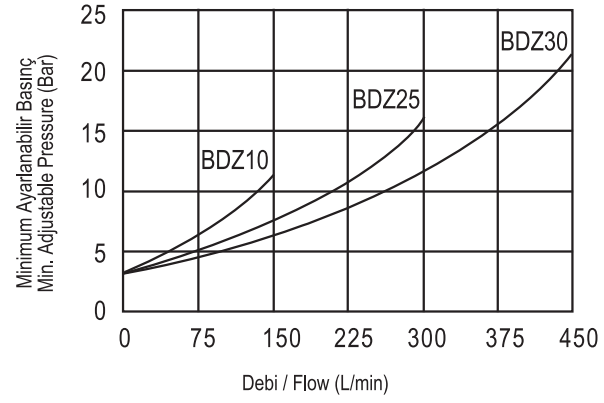
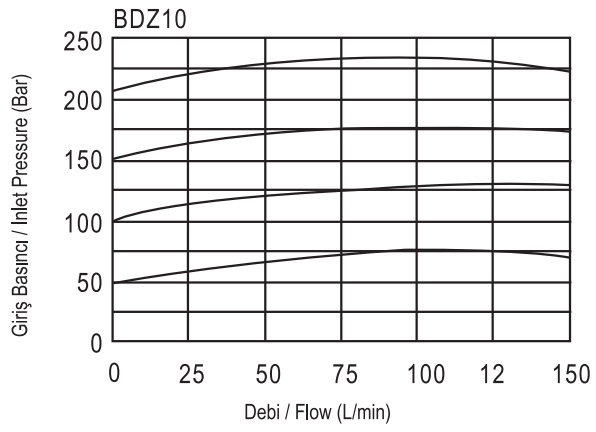
Teknik Bilgi / Technical Data

Ölçü / Size	10	20	32
Debi / Flow (L/min)	150	300	450
ABX hattı Çalışma basıncı / Operating pressure of ABX port (Bar)	315		
Karşı basınç Y hattı / Back pressure Y port (Bar)	315		
Ayarlanabilir siviç basıncı / Adjustable switching pressure (Bar)	3 - 210		
Yağın sıcaklık aralıęı / Fluid temperature (°C)	-20 - 70		

20

► BDZ Basınç & Debi Eğrileri

BDZ Pressure & Flow Curves



1

P
R
E
S
S
U
R
E

C
O
N
T
R
O
L

V
A
L
V
E
S

► BDZ Montaj Ölçüleri

BDZ Installation Dimensions

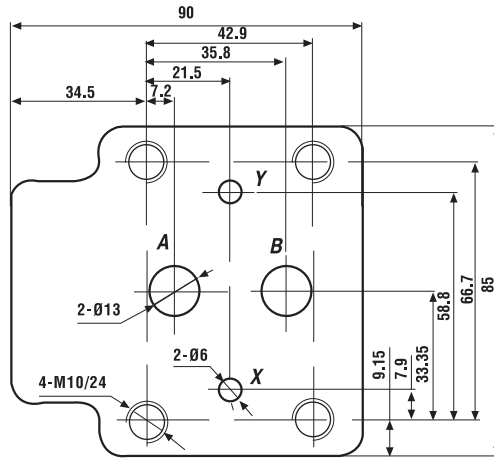
1

P
R
E
S
S
U
R
E

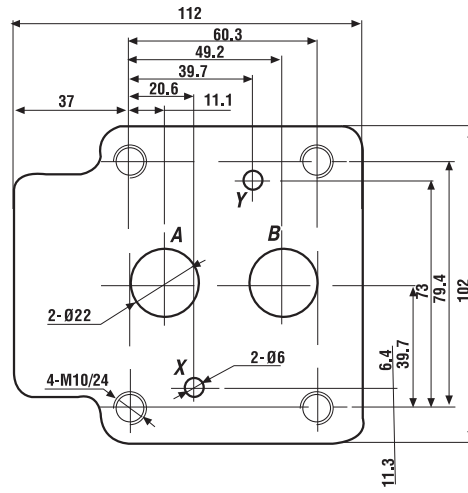
C
O
N
T
R
O
L

V
A
L
V
E
S

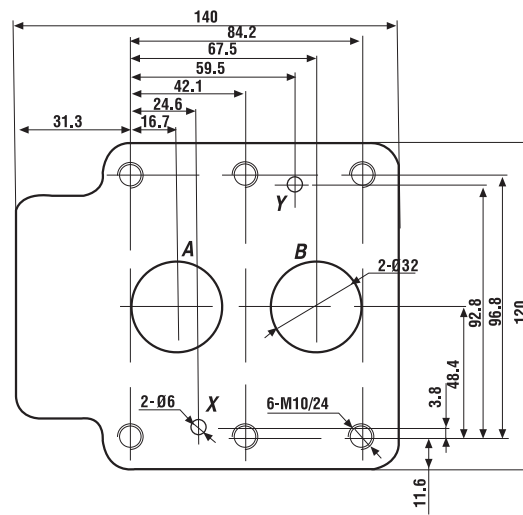
BDZ10



BDZ20



BDZ30

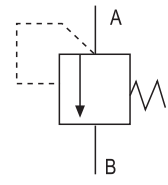


► BCEY - 2 DİŞLİ TİP DİREK EMNİYET VALFLERİ

BCEY-2 PLUG-IN DIRECT RELIEF VALVES

- BCEY-2 serisi valfler küçük yapısı, mükemmel performansı ile, küçük debili hidrolik güç ünitelerinde yaygın olarak kullanılan basınç emniyet valfleridir.

BCEY-2 relief cartridge valves are used to limit pressure in hydraulic system, with compact structure, excellent performance, which are widely used in power units small flow.



Model

A : El çevirmeli
B : Ayarlanabilir vidalı

A : Handwheel
B : Adjustable screw

Ölçü / Size 8

BCEY A 8 - 10 / 315 V



Kod yok : NBR keçe petrol yağları için
V : FPM keçe fosfat ester için

No code : NBR seals for petroleum oils
V : FPM seals for phosphate ester

Basınç Aralığı (Bar) 25, 50, 200, 315

Pressure range (Bar) 25, 50, 200, 315

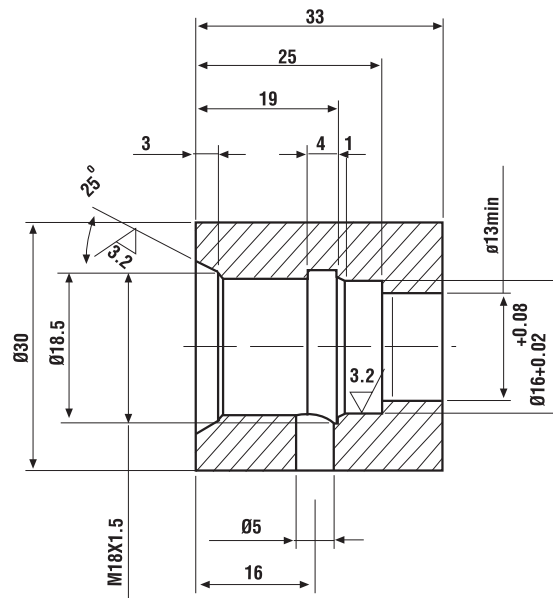
Seri Numarası / Series number

Teknik Bilgi / Technical Data

Çalışma basıncı / Operating pressure (Bar)	50	100	200	315
Mak. debi / Max. Flow (L/min)	8			
Yağın sıcaklık aralığı / Fluid temperature (°C)	-20 ~ 70			
Filtreleme hassasiyeti / Filtration Accuracy (µm)	25			

► BCEY Pleyte Montaj Ölçüleri

BCEY Installation Dimensions for Subplate



1

P
R
E
S
S
U
R
E

C
O
N
T
R
O
L

V
A
L
V
E
S

► BXB / BXBK MODEL ORANSAL BASINÇ EMNİYET VALFLERİ

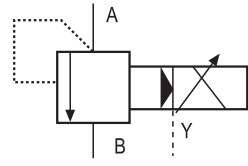
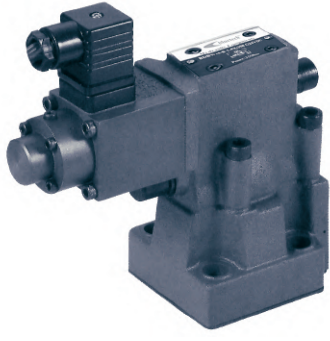
BXB / BXBK TYPE PROPORTIONAL PRESSURE RELIEF VALVES

1

P
R
E
S
S
U
R
E
C
O
N
T
R
O
L
V
A
L
V
E
S

- BXB serisi pilot uyarılı oransal emniyet basınç valfleri popet yapıları ile sistem basıncını elektrik giriş sinyali ile değiştirebilirler. Basınç limiti, oransal solenoid ve ona gönderilen akım şiddeti ile ayarlanabilir. BXBK oransal emniyet valfi BXB oransal emniyet valfine bir yay monte edilmesiyle oluşur ve aşırı yüklü basınçlara karşı koruma sağlar.

BXB type valve is a pilot operated pressure relief valve with poppet structure, which can change the system pressure continuously by electrical input signal, the pressure limit can be preset by proportional solenoid and may be relative with current. BXBK relief valve in the BXB-based, install a spring loaded pressure relief valve to provide maximum pressure protection.



BXB K T 10 - 30 / 315 Y / 2 V *

Kod yok : Aşırı yüksek basınca karşı korumasız
K : Aşırı yüksek basınca karşı korumalı

No code : Without max, pressure protection
K : With max, pressure protection

Kod yok : Pilot uyarılı basınç emniyet valfi
C : Ana sürgü montajlı pilot valf
C : Ana sürgüsüz pilot valf
T : Pilot uyarılı valf kumanda (uzaktan kumandalı valf gibi)

No code : Pilot operated pressure relief valve
C : Pilot valve with main spool assembly
C : Pilot valve without main spool
T : Pilot operated valve as remote control valve

Ölçü / Size 10, 20, 30

60 : Seri / Series

Çalışma basıncı / Working Pressure (Bar)
100, 200, 315

Daha fazla bilgi
For further details

Kod yok : NBR keçe petrol yağları için
V : FPM keçe fosfat ester için
No code : NBR seals for petroleum oils
V : FPM seals for phosphate ester

Kod yok : Inch dişli
Z : Metrik dişli
No code : Inch thread
Z : Metric thread

Y : İçten pilot, dıştan akışlı
XY : Dıştan pilot, dıştan akışlı

Y : Internally piloted / externally drained
XY : externally piloted / externally drained